

# MyMETEOTRACKER GUIDE

<b>1. Background.....</b>	<b>1</b>
<b>2. What is MyMeteoTracker.....</b>	<b>2</b>
<b>3. MyMeteoTracker functionalities - overview.....</b>	<b>3</b>
3.1. Personal Interactive Map.....	3
3.1.1. Web site embedding.....	3
3.1.2. Time filtering.....	3
3.1.3. Variable Selection.....	3
3.1.4. Statistical Analysis.....	3
3.1.5. Smart Sharing.....	4
3.1.6. MeteoPhotos Integration.....	4
3.2. The Virtual Fixed Stations.....	4
3.3. Advanced CSV Management.....	4
3.4. Unlimited Visibility of Public MeteoTracker Sessions.....	4
<b>4. MyMeteoTracker functionalities - details.....</b>	<b>5</b>
4.1. Personal Interactive Map.....	5
4.1.1. Website Embedding.....	6
4.1.2. Time filtering.....	6
4.1.2.1. Historical Data Selection.....	7
4.1.3. Variable selection.....	8
4.1.4. Statistical analysis.....	8
4.1.4.1. Global statistics.....	8
4.1.4.2. Dynamic statistics.....	9
4.1.5. Smart Sharing.....	10
4.1.6. MeteoPhoto on map.....	10
4.2. The Virtual Fixed Stations (VFS).....	11
4.2.1. Creating a Virtual Fixed Station.....	11
4.3. Advanced CSV management.....	12
4.4. Unlimited Visibility of Public MeteoTracker Sessions.....	14
<b>5. Private interactive map.....</b>	<b>15</b>
<b>6. References.....</b>	<b>15</b>

## 1. Background

**MeteoTracker** is a comprehensive hardware and software platform designed to create mobile weather networks based on the “**vehicle as a mobile sensor**” paradigm. By transforming moving vehicles into weather monitoring stations, MeteoTracker enables the collection of high-resolution meteorological data across large geographic areas.

The platform is available in several configurations to address different operational needs:

- **MeteoTracker Personal Weather Device** – designed for individual users who wish to explore micrometeorology, investigate local weather variations, and collect and analyze atmospheric data during their travels.
- **MeteoTracker Citizen Science** – intended for collaborative projects involving groups of volunteers who contribute weather observations to support scientific research, environmental monitoring, and community initiatives.
- **MeteoTracker Standalone** – designed for organizations operating vehicle fleets, enabling fully automated weather data collection and the deployment of large-scale mobile weather networks.

The hardware component of the platform is the **MeteoTracker** measurement device. This instrument incorporates the patented **RECS (Radiation Error Correction System)** technology (patents **US 11,525,745**, **JP 7198510**, and **EP 3645989**), which removes measurement errors caused by solar radiation. As a result, the device delivers highly accurate air temperature measurements even under intense sunlight and at very low vehicle speeds.

## 2. What is MyMeteoTracker

**MyMeteoTracker** is an optional **cloud-based data service** designed for users of the **MeteoTracker Personal Weather Device**. It extends the capabilities by significantly increasing the ways in which data can be accessed, explored, and utilized by providing a centralized environment where weather observations are automatically uploaded, stored, visualized, analyzed, and shared.

More than a simple data repository, MyMeteoTracker enables users to transform their measurements into actionable insights. Through an intuitive web interface, users can review their observation routes, explore weather conditions along their journeys, and examine local atmospheric variations with high spatial resolution. This makes MyMeteoTracker particularly valuable for individuals interested in micrometeorology, urban climate studies, environmental monitoring, and weather-related outdoor activities.

### 3. MyMeteoTracker functionalities - overview

Access to **MyMeteoTracker** is provided through a personalized web address automatically generated by the system. This unique URL is sent to the user by email after the first MeteoTracker measurement session and provides direct access to the user's personal cloud environment.

MyMeteoTracker offers a comprehensive set of tools for visualizing, analyzing, managing, and sharing weather observations collected with the MeteoTracker Personal Weather Device.

#### 3.1. Personal Interactive Map

The core of MyMeteoTracker is a personal interactive map that displays all collected observations in a simple and intuitive interface. The map can also be embedded into any website using a standard iFrame, allowing users to publish and share their weather data online.

##### 3.1.1. Web site embedding

The MeteoTracker interactive map can be embedded into any website using a standard HTML iFrame

##### 3.1.2. Time filtering

Both real-time observations and the complete archive of previously collected data are always available through the interactive map, providing seamless access to the entire measurement history.

##### 3.1.3. Variable Selection

Users can visualize different meteorological variables through a dedicated drop-down menu. This allows quick switching between available parameters and facilitates detailed analysis of weather conditions.

##### 3.1.4. Statistical Analysis

MyMeteoTracker provides two levels of statistical analysis:

- **Global statistics**, calculated across the user's entire data archive.
- **Dynamic statistics**, automatically calculated for the geographic area and time range currently selected on the map.

This enables both long-term trend analysis and detailed investigation of specific weather events or locations.

##### 3.1.5. Smart Sharing

Selected data views can be easily shared through automatically generated URLs. Shared links preserve the chosen geographic area, displayed parameter, and time range, ensuring that recipients see exactly the same data view.

### 3.1.6. MeteoPhotos Integration

Photos captured during observation sessions are displayed directly on the map. Each photo is associated with the exact geographic location where it was taken, providing valuable visual context for weather observations.

## 3.2. The Virtual Fixed Stations

The **Virtual Fixed Stations** feature uses geo-fencing technology to automatically collect and aggregate MeteoTracker observations measured within user-defined geographic areas. This allows users to monitor specific locations over time, even when data is collected by mobile measurements.

## 3.3. Advanced CSV Management

Users can download their measurement sessions in CSV format for offline analysis, scientific research, reporting, or integration with third-party software. Advanced export options facilitate efficient management of large datasets.

## 3.4. Unlimited Visibility of Public MeteoTracker Sessions

MyMeteoTracker users have unlimited access to the public MeteoTracker database on [app.meteotracker.com](http://app.meteotracker.com), enabling exploration of observations collected by the wider MeteoTracker community and comparison with their own measurements.

# 4. MyMeteoTracker functionalities - detailed description

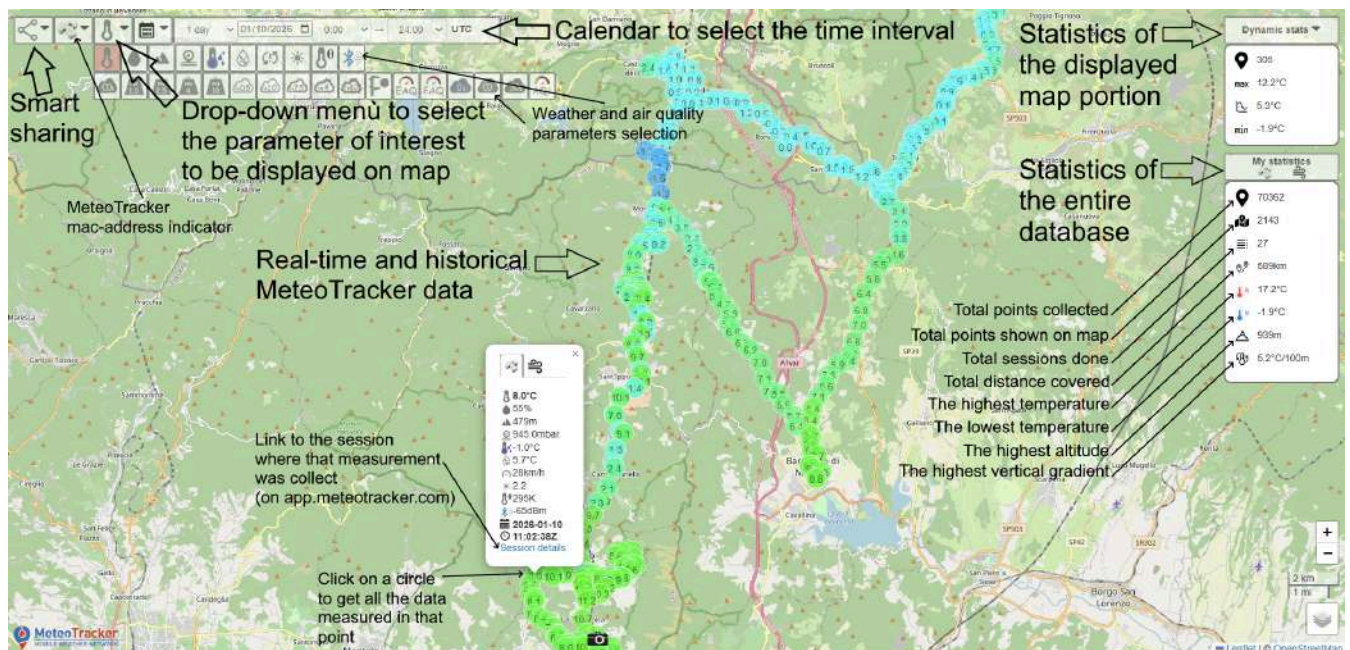
## 4.1. Personal Interactive Map

The interactive map is the central visualization tool of MyMeteoTracker. It displays the weather observations collected by the user's MeteoTracker device, placing each measurement at the geographic location where it was recorded.

To maintain map readability, the displayed data is automatically reduced to one measurement point per minute. This displayed sampling rate is typically lower than the actual measurement frequency of the MeteoTracker device. However, the minimum and maximum values recorded

during each session are always displayed to ensure that significant weather observations are not missed.

Each measurement point displayed on the map includes a direct link to the corresponding observation session, allowing users to perform more detailed analyses through the MeteoTracker dashboard available at [app.meteotracker.com](http://app.meteotracker.com).



The figure above illustrates the main components and functionalities of the interactive map.

#### 4.1.1. Website Embedding

The MeteoTracker interactive map can be embedded into any website using a standard HTML iFrame. This allows users to publish and share their weather observations directly on personal websites, blogs, project pages, or institutional portals.

Example:

```
<p><iframe src="https://app.meteotracker.com/html/map/world?lat=45&lon=10&zoom=5" allow="clipboard-write" width="100%" height="700"></iframe></p>
```

#### 4.1.2. Time filtering

The interactive map provides flexible time-filtering options, allowing users to visualize both real-time and historical observations.

By default, the map displays data collected during the **last 24 hours**. Additional predefined time intervals are available:

- Last 12 hours
- Last 6 hours

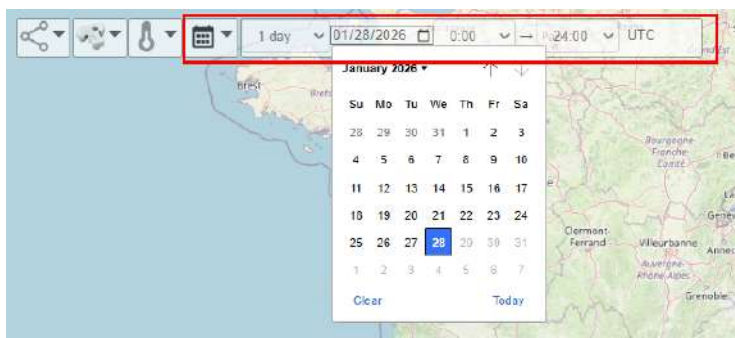
- Last 3 hours
- Last 1 hour
- Last 30 minutes



As new observations are uploaded, the map is automatically updated, providing real-time visualization of the latest available data.

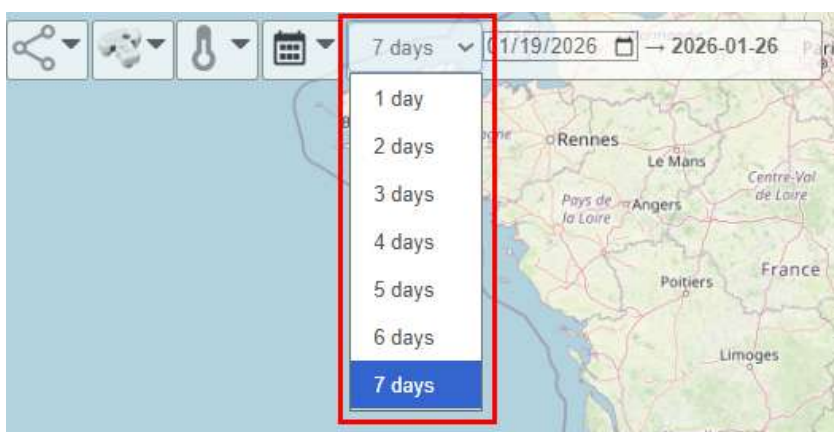
#### 4.1.2.1. Historical Data Selection

Historical observations can be explored using the calendar tool, which allows users to select a specific date and time period for analysis.



In addition to predefined intervals, users can define a custom time window ranging from **1 to 7 consecutive days**, selectable via the dedicated drop-down menu, starting from the selected date.

In the example below, the map displays all observations collected between **January 19 and January 26**, allowing the complete dataset for that period to be visualized on a single map.



### 4.1.3. Variable selection

The variable displayed on the interactive map can be selected using the dedicated drop-down menu.

By default, the map displays **air temperature**. Users can select any of the variables measured or derived by the MeteoTracker system, depending on the available dataset.

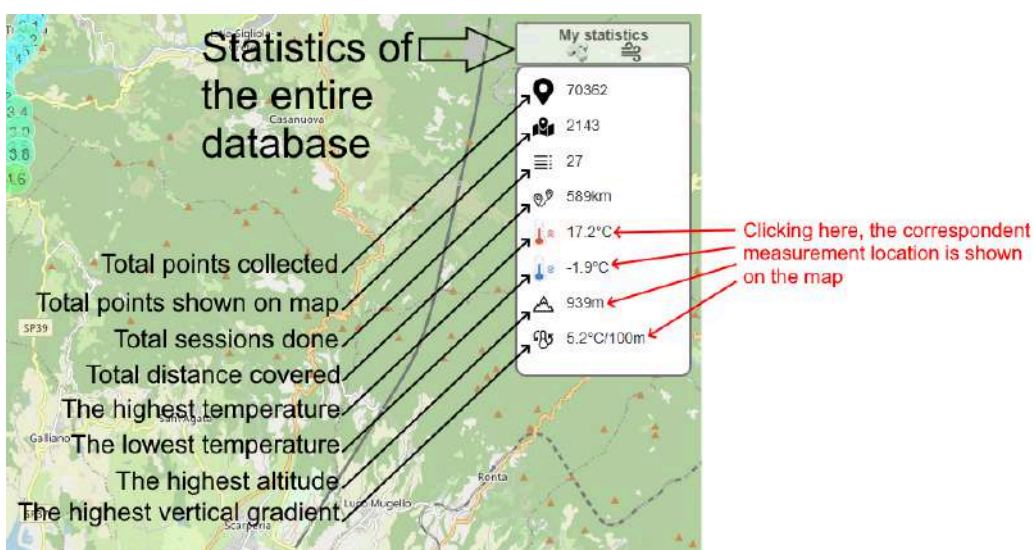
When a different variable is selected, the map is automatically updated to display the corresponding observations, allowing users to explore different aspects of the collected weather data.



### 4.1.4. Statistical analysis

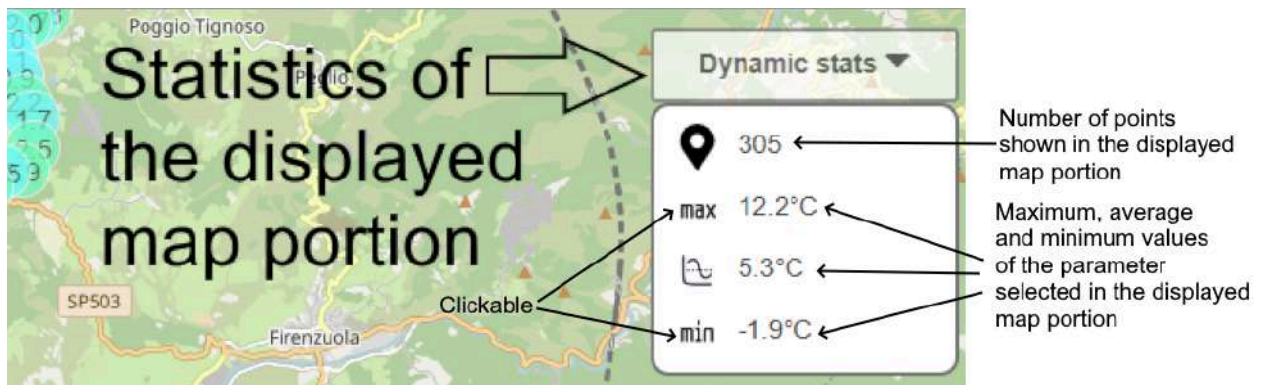
#### 4.1.4.1. Global statistics

**Global statistics** are calculated using the user's entire MyMeteoTracker database and provide an overview of the complete collection of weather observations. The statistics displayed are shown in the image below.



#### 4.1.4.2. Dynamic statistics

**Dynamic statistics** are calculated in real time based on the **currently selected geographic area, time interval, and displayed variable**. They provide a statistical summary of only the observations visible on the interactive map, allowing users to analyze weather conditions for a specific location and period of interest.

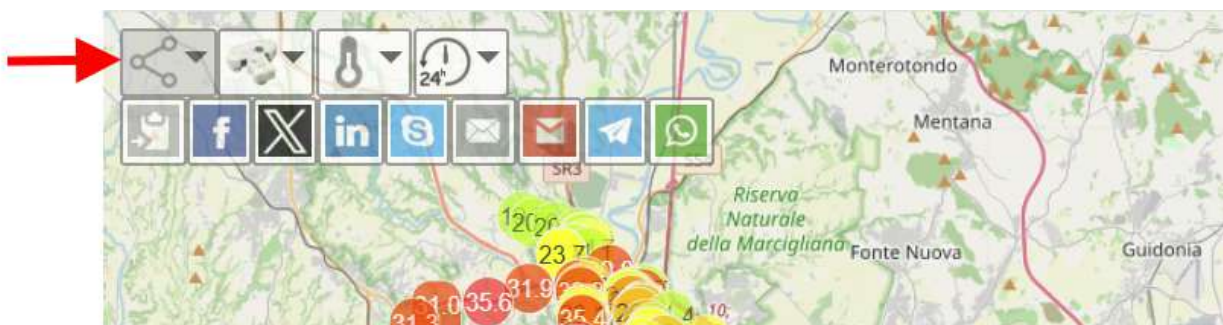


#### 4.1.5. Smart Sharing

The **Smart Sharing** feature allows users to generate a unique URL that preserves the current map view, including the selected geographic area, displayed variable, and time interval. Anyone opening the generated link will see exactly the same map configuration, making it easy to share specific weather observations with colleagues, collaborators, or the public.

In the example below, the generated URL displays **relative humidity** observations in the **Trento** area for the time period between **6:00 AM and 11:00 AM on January 22**.

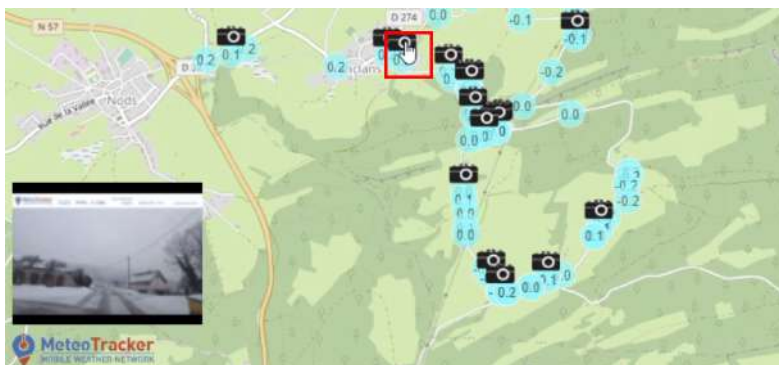
<https://app.meteotracker.com/html/myMT/rizzo?lat=46.065&lon=11.221&zoom=13&id=H&date=2026-01-22&timeFrom=6&timeTo=11&tags=AC:4D:16:2B:47:26>



#### 4.1.6. MeteoPhoto on map

**MeteoPhoto** is a functionality of the MeteoTracker app that superimposes the weather data measured when the picture is taken. MeteoPhoto are then associated with the related sessions on the dashboard ([app.meteotracker.com](http://app.meteotracker.com)).

**MyMeteoTracker extends the fruition of the personal MeteoPhotos collection showing them on the interactive map**, with each icon placed in the location where the photo has been taken. **Mouse-hovering on an icon** shows the MeteoPhoto preview. Clicking on the preview, the MeteoPhoto is enlarged.

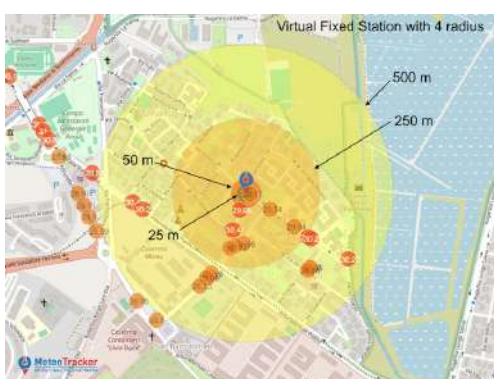


## 4.2. The Virtual Fixed Stations (VFS)

A **Virtual Fixed Station (VFS)** is a geo-fencing feature that enables users to create a virtual weather station at any location of interest. By defining a geographic point and one or more capture radii around it, **MyMeteoTracker automatically collects all observations recorded by MeteoTracker devices passing within the selected area.**

This approach transforms mobile weather observations into a continuous time series, effectively emulating the operation of a fixed weather station through a **spatial-to-time transformation**. As more measurement sessions pass through the selected area, the VFS builds a historical record of the local meteorological conditions.

Each **Virtual Fixed Station can be configured with multiple capture radii**. Every radius generates an independent time series, allowing users to compare how the size of the sampling area influences the collected observations. This flexibility makes VFS particularly useful for long-term monitoring of specific locations, urban climate studies, environmental research, and the analysis of local weather variability.



### 4.2.1. Creating a Virtual Fixed Station

Setting up a **Virtual Fixed Station (VFS)** is a quick and straightforward process that can be completed through [app.meteotracker.com](https://app.meteotracker.com):

- **Select the location of interest.** Identify the point where time-series observations are required using the MeteoTracker interactive map. The latitude and longitude of the selected location are displayed by clicking on the map.
- **Define one or more capture radii.** Specify the radius (or multiple radii) around the selected location within which MeteoTracker observations will be captured.
- **Automatic data collection.** Every MeteoTracker observation recorded within a capture radius is automatically associated with the corresponding Virtual Fixed Station.
- **Visualize time-series data.** MyMeteoTracker automatically generates time-series plots of the measured variables for each capture radius. If multiple radii are defined, a separate set of plots is created for each one.
- **Export data.** The time-series data associated with each capture radius can be exported in CSV format for further analysis or integration into external workflows.
- **Access data through the API.** A dedicated API is available to provide direct access to the VFS data stream, enabling integration with third-party applications, dashboards, and monitoring platforms.

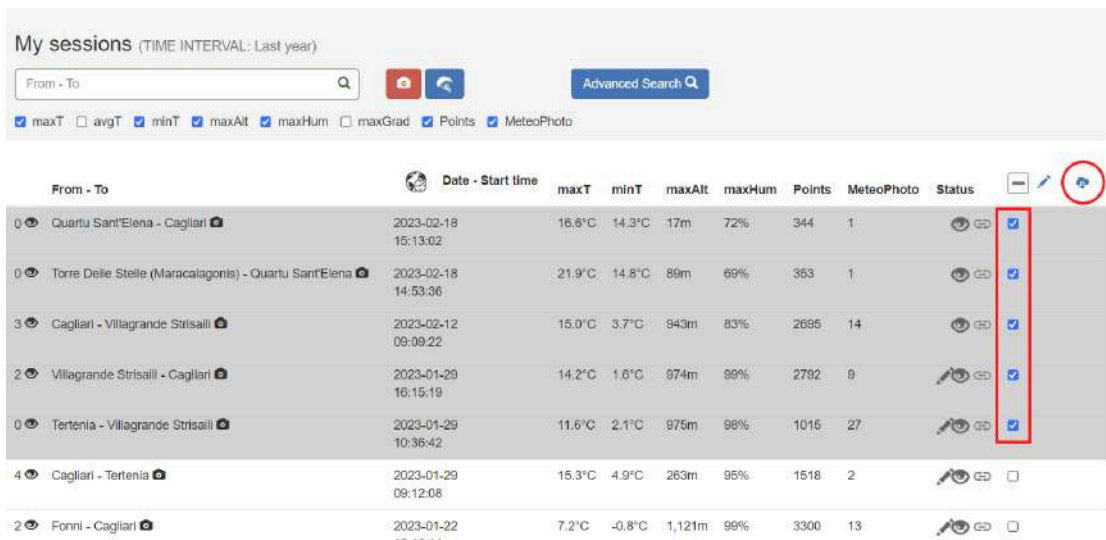
Detailed step-by-step instructions for creating and managing Virtual Fixed Stations are available in the [Virtual Fixed Stations User Manual](#).

### 4.3. Advanced CSV management

MyMeteoTracker allows users to download **multiple measurement sessions simultaneously** in CSV format, simplifying the management of large datasets for further analysis or archiving.

The download procedure is straightforward:

- **Select the measurement sessions** to be exported from "My" sessions on [app.meteotracker.com](https://app.meteotracker.com).
- **Click the CSV download icon** located above the session list on the right-hand side.



The screenshot shows the 'My sessions' page with a table of measurement sessions. A red box highlights the CSV download icons (represented by a blue square with a white document icon) for several sessions. The table columns include: From - To, Date - Start time, maxT, minT, maxAlt, maxHum, Points, MeteoPhoto, Status, and a set of action icons (minus, edit, and CSV download).

From - To	Date - Start time	maxT	minT	maxAlt	maxHum	Points	MeteoPhoto	Status	Action
0 📍 Quartu Sant'Elena - Cagliari 📍	2023-02-18 15:13:02	16.8°C	14.3°C	17m	72%	344	1	👁️ 📄	📄
0 📍 Torre Delle Stelle (Maracalagonis) - Quartu Sant'Elena 📍	2023-02-18 14:53:36	21.9°C	14.8°C	89m	69%	363	1	👁️ 📄	📄
3 📍 Cagliari - Villagrande Stisaili 📍	2023-02-12 09:09:22	15.0°C	3.7°C	843m	83%	2695	14	👁️ 📄	📄
2 📍 Villagrande Stisaili - Cagliari 📍	2023-01-29 16:15:19	14.2°C	1.6°C	974m	99%	2792	9	👁️ 📄	📄
0 📍 Tertenia - Villagrande Stisaili 📍	2023-01-29 10:36:42	11.6°C	2.1°C	975m	98%	1015	27	👁️ 📄	📄
4 📍 Cagliari - Tertenia 📍	2023-01-29 09:12:08	15.3°C	4.9°C	263m	95%	1518	2	👁️ 📄	📄
2 📍 Fonni - Cagliari 📍	2023-01-22 16:49:14	7.2°C	-0.8°C	1,121m	99%	3300	13	👁️ 📄	📄



My sessions (TIME INTERVAL: Last year)

From - To

maxT  avgT  minT  maxAlt  maxHum  maxGrad  Points  MeteoPhoto

From - To	Date - Start time	maxT	minT	maxAlt	maxHum	Points	MeteoPhoto
0  Quartu Sant'Elena - Cagliari	2023-02-18 15:13:02	16.6°C	14.3°C	17m	72%	344	1
0  Torre Delle Stelle (Maracalagonis) - Quartu Sant'Elena	2023-02-18 14:53:36	21.9°C	14.8°C	89m	69%	353	1
3  Cagliari - Villagrande Stisallì	2023-02-12 09:09:22	15.0°C	3.7°C	943m	83%	2695	14
2  Villagrande Stisallì - Cagliari	2023-01-29 10:15:19	14.2°C	1.6°C	974m	99%	2792	9
0  Tertenia - Villagrande Stisallì	2023-01-29 10:36:42	11.6°C	2.1°C	975m	98%	1015	27
4  Cagliari - Tertenia	2023-01-29 09:12:08	15.3°C	4.9°C	263m	85%	1518	2
2  Fonni - Cagliari	2023-01-22 16:42:14	7.2°C	-0.8°C	1,121m	99%	3300	13
1  Fonni - Fonni	2023-01-22	-0.9°C	-1.0°C	1,306m	86%	31	2

20230129T08\_36\_4\_...csv   20230129T15\_15\_1\_...csv   20230212T08\_09\_2\_...csv   20230218T13\_53\_3\_...csv   20230218T14\_13\_0\_...csv

- The selected sessions are downloaded automatically, with each CSV file assigned a descriptive filename containing the main information associated with the corresponding measurement session, making the files easy to identify and organize.

### METEOTRACKER CSV FILE NAME STRUCTURE

Date and time of session start	Session's author nickname	Mac address of the MeteoTracker	Departure and arrival places
20230122T08_28_25	MeteoTracker	0C61CFA0AC6B	Caqliari-Fonni.csv

Each CSV file contains the **complete set of variables** measured during the selected session. Every observation is **georeferenced** (latitude and longitude) and **time-stamped**, allowing the data to be imported into GIS software, spreadsheets, scientific analysis tools, or custom applications while preserving its full spatial and temporal information.

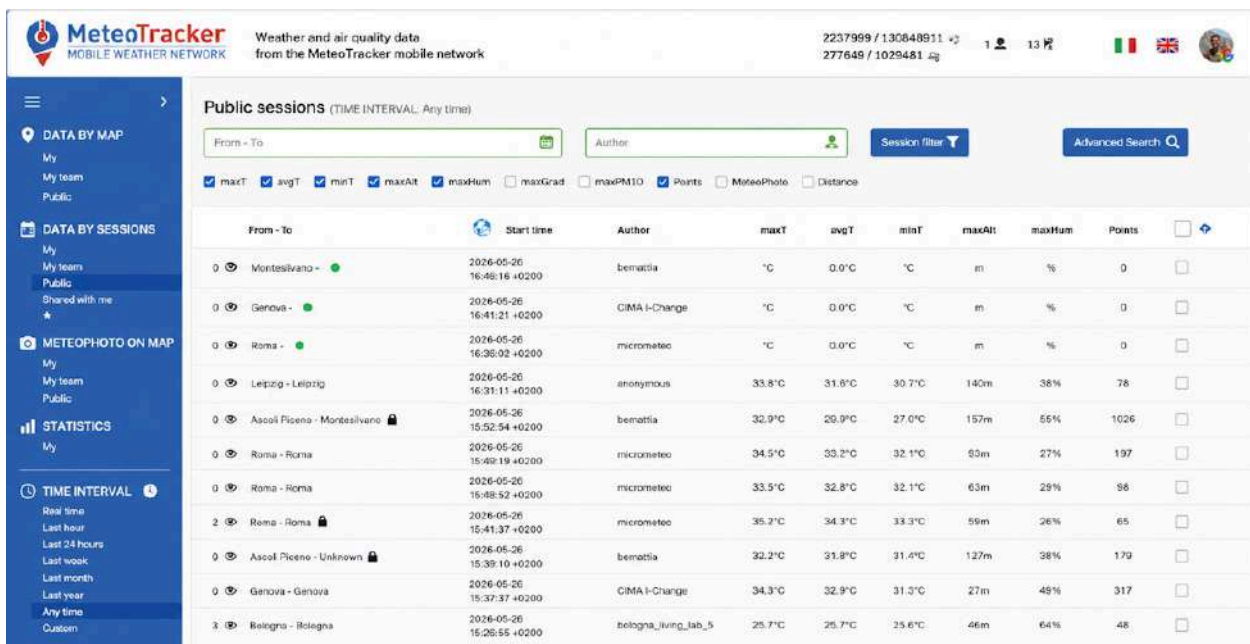
DEW-POINT										VERTICAL THERMAL				
A	B	C	D	E	F	G	H	I	J	K	L	M		
Time	Lat	Lon	Alt [m]	Temp [°C]	Hum [%]	Press [mbar]	DP [°C]	Radiation	Inversion [°C/100m]	HDX [°C]				
1	2022-09-03T11:09:38+0200	39.200437	9.149159	18.28.9	82	1014.25.4	1.3	-	-	43.7				
2	2022-09-03T11:09:42+0200	39.200573	9.148031	18.28.9	82	1014.25.4	1.3	-	-	43.6				
3	2022-09-03T11:09:44+0200	39.200742	9.148690	18.29.0	82	1014.25.4	1.4	-	-	43.7				
4	2022-09-03T11:09:47+0200	39.200924	9.148444	18.29.0	81	1014.25.4	1.3	-	-	43.7				
5	2022-09-03T11:09:50+0200	39.201213	9.148064	20.29.0	81	1014.25.3	1.3	-	-	43.6				
6	2022-09-03T11:09:53+0200	39.201477	9.147771	18.29.0	80	1014.25.1	1.1	-	-	43.2				
7	2022-09-03T11:09:56+0200	39.201696	9.147482	18.28.9	80	1014.25.0	1.4	-	-	43.1				
8	2022-09-03T11:09:59+0200	39.201877	9.147183	18.29.0	80	1014.25.1	1.3	-	-	43.3				
9	2022-09-03T11:10:02+0200	39.202061	9.146882	18.29.0	80	1014.25.1	1.6	-	-	43.4				
10	2022-09-03T11:10:05+0200	39.202131	9.146688	18.29.1	80	1014.25.1	1.6	-	-	43.5				
11	2022-09-03T11:10:08+0200	39.202237	9.146575	18.28.9	79	1014.24.9	2.9	-	-	43.0				
12	2022-09-03T11:10:11+0200	39.202346	9.146466	18.28.9	79	1014.24.7	3.5	-	-	42.8				
13	2022-09-03T11:10:14+0200	39.202483	9.146358	18.28.8	79	1014.24.7	4.2	-	-	42.5				
14	2022-09-03T11:10:17+0200	39.202643	9.146769	18.29.0	78	1014.24.8	3.1	-	-	43.1				
15	2022-09-03T11:10:20+0200	39.202837	9.146075	18.28.8	78	1014.24.6	4.5	-	-	42.5				
16	2022-09-03T11:10:23+0200	39.203018	9.146592	18.29.1	78	1014.24.8	2.8	-	-	43.1				
17	2022-09-03T11:10:26+0200	39.203144	9.146783	18.29.0	78	1014.24.7	4.0	-	-	42.8				
18	2022-09-03T11:10:29+0200	39.203272	9.146482	20.29.0	78	1014.24.8	4.7	-	-	43.0				
19	2022-09-03T11:10:32+0200	39.203406	9.146157	20.29.1	78	1014.24.7	4.7	-	-	42.9				
20	2022-09-03T11:10:35+0200	39.203557	9.145858	20.29.1	77	1014.24.6	4.8	-	-	42.8				
21	2022-09-03T11:10:38+0200	39.203713	9.145571	19.29.1	77	1014.24.7	4.8	-	-	42.9				
22	2022-09-03T11:10:41+0200	39.203729	9.145348	18.29.1	77	1014.24.7	4.4	-	-	42.9				
23	2022-09-03T11:10:44+0200	39.203802	9.145156	18.29.1	77	1014.24.6	5.1	-	-	42.8				
24	2022-09-03T11:10:47+0200	39.203863	9.144916	18.29.1	77	1014.24.6	5.2	-	-	42.8				
25	2022-09-03T11:10:50+0200	39.203628	9.144685	18.29.1	77	1014.24.5	5.2	-	-	42.7				
26	2022-09-03T11:10:53+0200	39.203777	9.144359	18.29.1	77	1014.24.6	5.6	-	-	42.8				
27	2022-09-03T11:10:56+0200	39.204016	9.144054	18.29.1	77	1014.24.6	5.6	-	-	42.8				
28	2022-09-03T11:10:59+0200	39.204194	9.143802	18.29.1	77	1014.24.5	5.6	-	-	42.7				
29	2022-09-03T11:11:02+0200	39.204222	9.143567	18.29.1	76	1014.24.5	5.0	-	-	42.7				
30	2022-09-03T11:11:05+0200	39.204279	9.143341	18.29.1	76	1014.24.5	5.6	-	-	42.5				
31	2022-09-03T11:11:08+0200	39.204196	9.143504	18.29.1	76	1014.24.5	-	-	-	42.6				
32	2022-09-03T11:11:11+0200	39.204210	9.143470	18.29.1	76	1014.24.4	-	-	-	42.5				
33	2022-09-03T11:11:14+0200	39.204275	9.143377	18.29.2	76	1014.24.5	-	-	-	42.7				

#### 4.4. Unlimited Visibility of Public MeteoTracker Sessions

While a standard MeteoTracker account provides full access to the user's own measurement sessions on [app.meteotracker.com](http://app.meteotracker.com), **MyMeteoTracker** extends these capabilities by providing unlimited visibility into all public MeteoTracker sessions.

Each public session can be explored in detail through synchronized time-series graphs, comprehensive statistical summaries, and MeteoPhotos (when available). Advanced search and filtering tools enable users to locate sessions based on geographic area, date and time, measured variables, authors, and other available criteria.

This feature allows users to compare their own observations with measurements collected by the global MeteoTracker community, facilitating environmental analyses across different locations, seasons, and meteorological conditions.



The screenshot displays the 'Public sessions' page on the MeteoTracker website. It features a navigation sidebar on the left with options like 'DATA BY MAP', 'DATA BY SESSIONS', 'METEOPHOTO ON MAP', 'STATISTICS', and 'TIME INTERVAL'. The main content area includes search filters for 'From - To', 'Author', and 'Session filter', along with an 'Advanced Search' button. Below these filters is a table listing various weather sessions with columns for location, start time, author, and various weather metrics.

From - To	Start time	Author	maxT	avgT	minT	maxHum	maxHum	Points
Montesivano -	2026-05-26 16:46:16 +0200	bermetia	°C	0.0°C	°C	m	%	0
Genova -	2026-05-26 16:41:21 +0200	GIMA I-Change	°C	0.0°C	°C	m	%	0
Roma -	2026-05-26 16:35:02 +0200	micrometeo	°C	0.0°C	°C	m	%	0
Leipzig - Leipzig	2026-05-26 16:31:11 +0200	anonymous	33.8°C	31.8°C	30.7°C	140m	38%	78
Ascoli Piceno - Montesivano	2026-05-26 15:52:54 +0200	bermetia	32.9°C	29.9°C	27.0°C	157m	55%	1026
Roma - Roma	2026-05-26 15:49:19 +0200	micrometeo	34.5°C	33.2°C	32.1°C	83m	27%	197
Roma - Roma	2026-05-26 15:48:52 +0200	micrometeo	33.5°C	32.8°C	32.1°C	63m	25%	98
Roma - Roma	2026-05-26 15:41:37 +0200	micrometeo	35.2°C	34.3°C	33.3°C	59m	26%	65
Ascoli Piceno - Unknown	2026-05-26 15:39:10 +0200	bermetia	32.2°C	31.8°C	31.4°C	127m	28%	179
Genova - Genova	2026-05-26 15:37:37 +0200	GIMA I-Change	34.3°C	32.9°C	31.3°C	27m	49%	317
Bolegna - Bolegna	2026-05-26 15:26:55 +0200	bolegna_living_lab_5	25.7°C	25.7°C	25.6°C	46m	64%	48

#### 5. Private interactive map

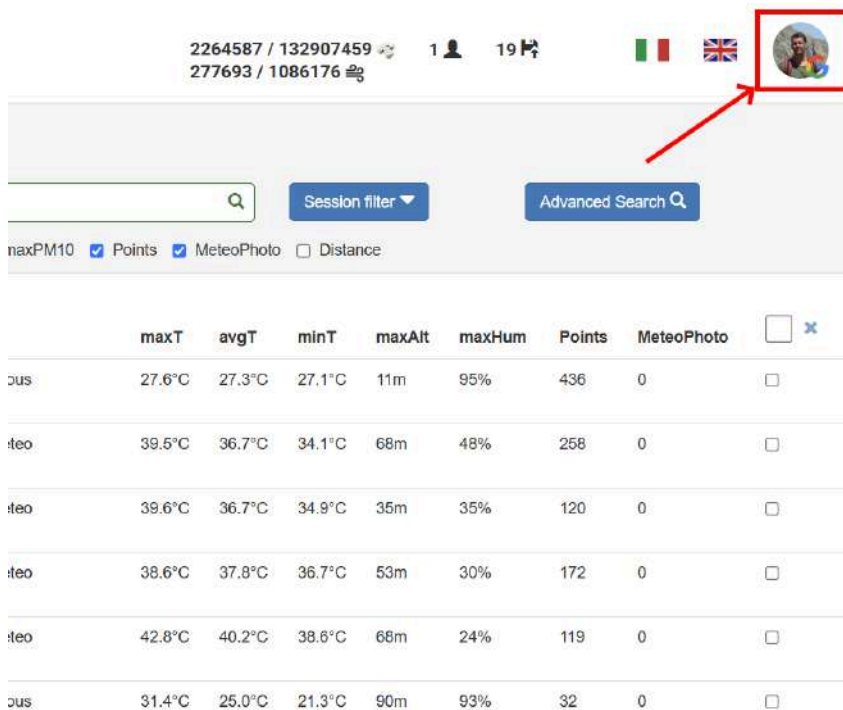
MyMeteoTracker enables the creation of a private interactive map that displays both the user's private and public measurement sessions.

Access to the private map is provided through an encrypted URL, ensuring that only users in possession of the link can view the private measurement data. This enables secure personal access to private data while allowing the map to be shared with collaborators whenever desired.

The private map provides the same visualization and navigation capabilities as the public interactive map, while seamlessly combining the user's public and private observations within a single interface.


How to activate the Private interactive map:

1) Click your avatar on top-right corner



	maxT	avgT	minT	maxAlt	maxHum	Points	MeteoPhoto	<input type="checkbox"/>
bus	27.6°C	27.3°C	27.1°C	11m	95%	436	0	<input type="checkbox"/>
teo	39.5°C	36.7°C	34.1°C	68m	48%	258	0	<input type="checkbox"/>
teo	39.6°C	36.7°C	34.9°C	35m	35%	120	0	<input type="checkbox"/>
teo	38.6°C	37.8°C	36.7°C	53m	30%	172	0	<input type="checkbox"/>
teo	42.8°C	40.2°C	38.6°C	68m	24%	119	0	<input type="checkbox"/>
bus	31.4°C	25.0°C	21.3°C	90m	93%	32	0	<input type="checkbox"/>

2) A **modal dialog** will open, displaying the encrypted URL of your private map. Select the checkbox next to the URL to enable it.



Welcome user\_1

Username: user\_1 [Default]

My MT: user\_1\_map [Default]

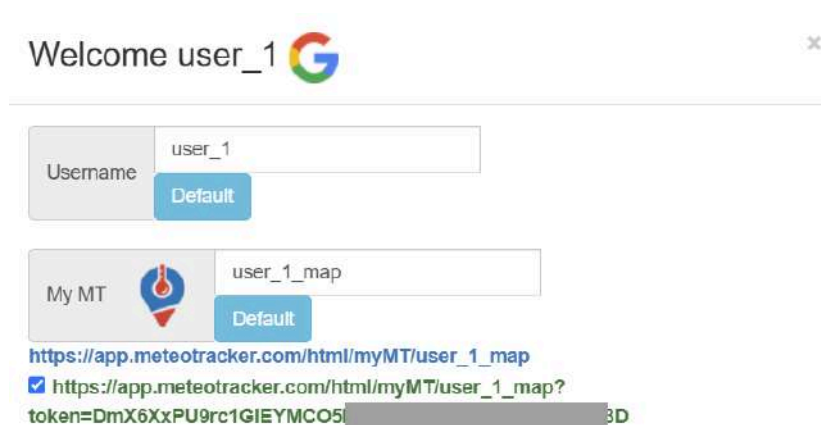
[https://app.meteotracker.com/html/myMT/user\\_1\\_map](https://app.meteotracker.com/html/myMT/user_1_map)

[https://app.meteotracker.com/html/myMT/user\\_1\\_map?token=...](https://app.meteotracker.com/html/myMT/user_1_map?token=...)

3) A **warning message** will appear. Confirm that you want to proceed.



4) **Your private interactive map is now enabled** and can be accessed using the encrypted URL.



## 6. References

For additional information about MeteoTracker products, documentation, and support, please refer to the following resources:

- **Manuals and datasheets:** <https://meteotracker.com/manual/>
- **Website:** <https://www.meteotracker.com>
- **Email:** [info@meteotracker.com](mailto:info@meteotracker.com)
- **LinkedIn:** <https://www.linkedin.com/showcase/meteotracker/>